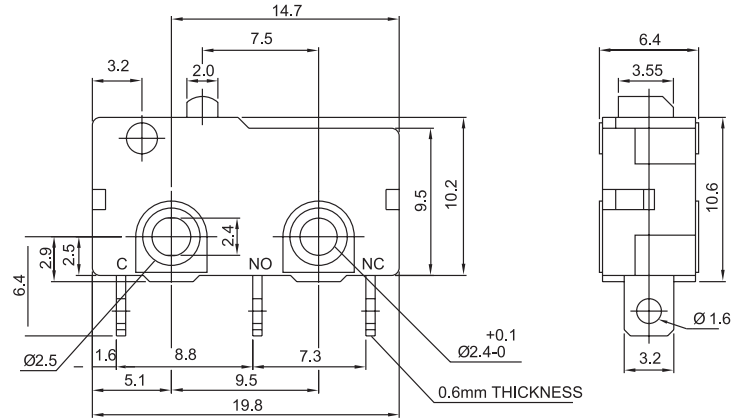


## SM SERIES

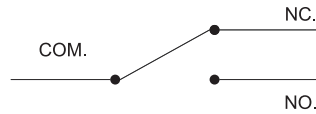
DIMENSIONS (Unless otherwise specified, a tolerance of  $\pm 0.4$  mm applies to all dimensions.)



## SPECIFICATIONS

Contact Resistance (initial).....	Max. 300m $\Omega$
Insulation Resistance (at 500VDC/minute).....	Min. 100M $\Omega$
Dielectric Strength.....	AC 1000VAC (50~60Hz)
Storage Temperature Range.....	-25°C to 85°C
Storage Humidity.....	at 40°C, Max. 85% R.H
Vibration.....	10~55Hz, displacement 0.75mm (p-p)
Electrical Service Life.....	0.1A - Min. 1,000,000 operations
	Other rating - Min. 6,000 operations
Electrical Operating Frequency ....	0.1A - 120 operations per minute
	Other rating - 10~30 operations per minute
Mechanical Service Life.....	Min. 10,000,000 operations
Mechanical Operating Frequency.....	120 operations per minute

## CONTACT CONFIGURATION



## RATING

0.1A 125 VAC, 0.1A 60 VDC,  
5A 125/250 VAC, 10.1A 125/250 VAC

## APPLICATION

Telephone, Air conditioner, Computer, Humidifier, Alarm, Time recorder, Mixer & Chopper, Solder gun, Neon phone, Fax machine, Joystick, Water pump, Gas detector, Pencil sharpener, Money sorter, Food processor, Electric knife, Toy car, Juicer, Electric steak pan .

## CERTIFICATE INFORMATION

UL	10.1A 125/250 VAC, 5A 125/250 VAC - 6000 cycles (Temp: 120°C)
	0.1A125 VAC, 0.1A 60 VDC - 6000 cycles (Temp: 65°C)
CSA	5A125/250 VAC, 0.1A 125/250 VAC, 0.1A 30 VDC, 3A 30 VDC - 6000 cycles

## THE SELECTION OF RATING & FORCE

MODEL	RATING	D	L	S	H	Q	T
SM	0.1A	*	*	*	*	*	*
	5A		*	*	*	*	*
	10.1A				*	*	*

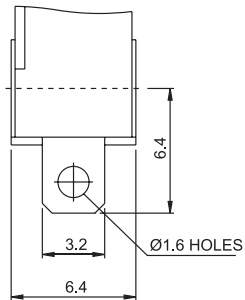
THE Symbol "\*" to represent the result is accept

## ORDERING INFORMATION

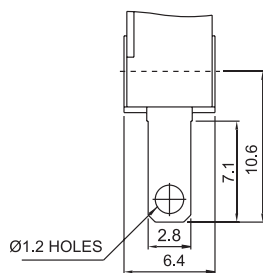
<b>S</b>	<b>M</b>	<b>0</b>	<b>5</b>	<b>S</b>	<b>0</b>	<b>3</b>	<b>P</b>	<b>O</b>	<b>Z</b>			
SERIES PREFIX	CODE	RATING CURRENT		CODE	OPERATING FORCE	CODE	ACTUATOR TYPE	CODE	TERMINAL TYPE	CODE	CONTACT ARRANGEMENT	ROHS CODE
	P1	0.1A 30VDC 0.1A 125/250VAC		T	MAX HEAVIER	00		A		0	S.P.D.T.	
	05	5A 125VAC/250VAC		Q	HEAVIER	01		B		1	S.P.S.T NO	
	10	10.1A 125VAC/250VAC		H	HEAVY	02		C		2	S.P.S.T NC	
				S	STANDARD	03		D				
				L	LIGHT	04		E				
				D	SLIGHT	05		P				
						06						
						07						
						08						
						09						
						10						
						11						

## TERMINAL TYPES (The thickness of each terminal is 0.6mm)

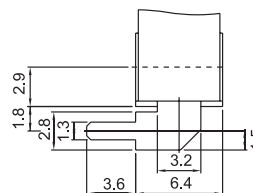
Solder terminal ATYPE



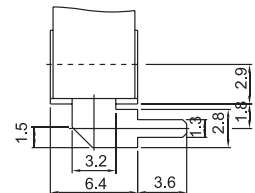
Quick connect terminal B TYPE (#110)



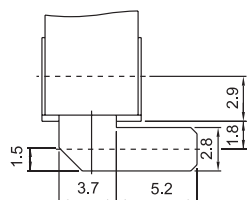
Side PCB terminal C TYPE



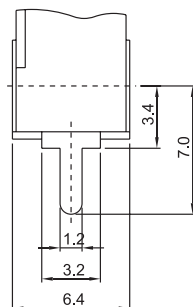
Side PCB terminal D TYPE



Side PCB terminal E TYPE

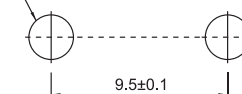


PCB terminal PTYPE

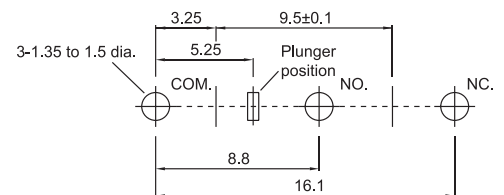


## MOUNTING HOLES

2-2.4 dia. mounting holes  
or M2.3 screw holes.



(For PCB Terminal)



## ORDERING CHARACTERISTICS

SWITCH TYPE	PART SUFFIX	OF MAX.		OP (mm)	PT MAX. (mm)	OT Min. (mm)	MD MAX. (mm)	FP MAX. (mm)	RF Min. (gf)
		H	S						
SM□□□-00□□-Z		H	249	11.4±0.3	1.1	0.4	0.2	12.2	50
		S	146						35
		L	104						20
SM□□□-01□□-Z		H	60	11.8±0.8	3.6	0.6	0.8	14.6	15
		S	35						10
		L	25						6
SM□□□-02□□-Z		H	55	11.8±0.9	4.0	0.6	0.8	14.9	13
		S	33						8
		L	25						6
SM□□□-03□□-Z		H	45	11.8±1.5	6.1	0.8	1.5	16.4	13
		S	25						6
		L	20						5
SM□□□-04□□-Z		H	56	13.7±1.0	4.6	0.8	0.8	17.3	13
		S	34						8
		L	25						5
SM□□□-05□□-Z		H	60	17.5±0.8	3.8	0.8	0.8	20.5	15
		S	35						8
		L	25						6
SM□□□-06□□-Z		H	48	19.0±1.5	5.7	1.0	1.0	23.2	10
		S	28						6
		L	20						4
SM□□□-07□□-Z		H	30	11.8±2.0	8.6	1.5	1.8	18.4	7
		S	20						4
		L	15						2
SM□□□-08□□-Z		H	30	-2.3±3.0	4.7	1.0	1.9	5.4	6
		S	20						4
		L	15						2
SM□□□-09□□-Z		H	18	11.8±3.0	13.3	1.0	2.9	22.1	4
		S	12						2.5
		L	8						1.5
SM□□□-10□□-Z		H	78	15.2±0.6	3.0	0.7	0.6	17.6	15
		S	46						10
		L	33						6
SM□□□-11□□-Z		H	55	15.1±1.5	5.2	0.6	0.9	18.8	13
		S	35						8
		L	26						5