

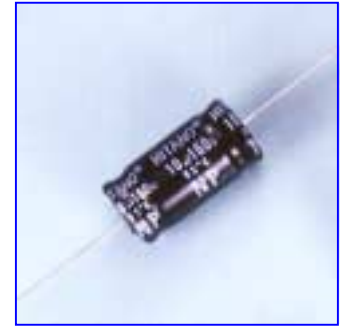
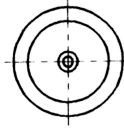
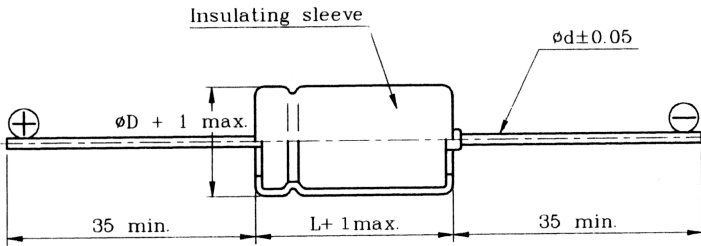
## ENA SERIES

- These are non-polar capacitors Axial Type designed for circuits with reversing polarity.
- Tolerance of  $\pm 10\%$  (K) if required can also be available on request.
- Life time 85°C 2000 Hours

### Characteristics

<b>Voltage Range</b>	50V – 100V		160V	
<b>Capacitance Range</b>	0.47 ~ 470uF			
<b>Temperature Range</b>	-40 ~ +85°C		-25 ~ +85°C	
<b>Capacitance Tolerance</b>	+20% -20% (at 20°C, 120Hz)			
<b>Leakage Current</b>	I=0.03C or 4uA max. (After 5 minutes)			
<b>Dissipation Factor(tan <math>\delta</math>)</b>	Rated voltage	50V	100V	160V
	tan $\delta$ (max)	0.15	0.12	0.15
(at 20°C, 120Hz)				
<b>Stability at Low Temperature</b>	Impedance ration at 120Hz			
	Rated Voltage (V)	50V	100V	160V
	Z-25°C/Z 20°C	2	2	3
Z-40°C/Z 20°C	3	3		
<b>Load Life</b>	After the rated voltage has been applied for 500 hours at 105°C (Total 1000 hours)	Capacitance change	Within $\pm 15\%$ of initial value	
		D.F. tan $\delta$	150% of less of initial specified value	
		Leakage current	Initial specified value of less	

### Diagram of dimensions



D $\phi$	6~13	16~18
d $\phi$	0.6	0.8

### Maximum Ripple Current mA rms 85°C, 120Hz

$\mu\text{F}$ \ vV	50V	100V	160V
0.47	10	13	17
1	16	20	25
2.2	24	32	38
3.3	29	47	43
4.7	39	55	52
6.8	50	60	71
10	67	71	89
15	75	143	
22	109	171	
33	143	210	
47	181	271	
68	260	392	
100	295	485	
150	442		
220	542		
330	751		
470	1070		

### Case Size of Standard Products DxL(mm)

$\mu\text{F}$ \ vV	50V	100V	160V
0.47	6x16	8x19	8x19
1	6x16	8x19	8x19
2.2	6x16	8x19	8x19
3.3	6x16	8x19	10x19
4.7	6x16	8x19	10x19
6.8	6x16	8x19	13x26
10	8x17	10x19	13x26
15	8x17	10x27	
22	8x17	13x27	
33	10x21	13x27	
47	10x21	13x27	
68	13x21	16x40	
100	13x26	18x40	
150	16x26		
220	16x40		
330	18x40		
470	18x40		